

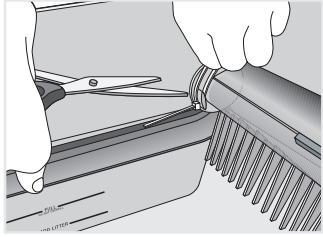


Self-Cleaning Litter Box

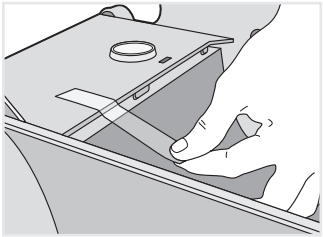
Quick Start Guide

No Tools Required for Setup

1. Unpack pieces: LitterMaid® scoop and rake cleaner, litter box, AC adapter (in paper pulp), disposable waste receptacles, Use & Care manual and cleaning brush (packed with disposable waste receptacles), plus any optional items including the carbon filters, paw-cleaning ramp and litter box carpet.



2. Cut and remove the restraints on each end of the rake.

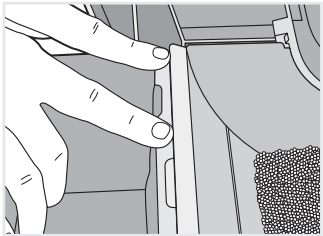


3. Peel off protective tape on the waste receptacle compartment cover and the battery compartment. Remove paper pulp on top of the rake.

Note: Battery compartment takes 8 "AA" cell batteries. (Batteries not included).

Important: Do not mix old and new batteries. Do not mix alkaline and carbon-zinc (standard) batteries. Do not use rechargeable type (Ni-Cad, Ni-MH or Li-Ion) batteries.

Installing Waste Receptacle:



Note: Unit comes with initial waste receptacle installed.

4. Place a disposable waste receptacle under the waste receptacle compartment cover. Make sure that the front of the waste receptacle is under the five tabs. There should be no gap between the unit and the waste receptacle.

5. Attach the waste receptacle lid by inserting the pushtabs into the round holes. To secure, press on the positions indicated.

Installing Carbon Filters:

6. Peel off the paper strip on the carbon filter to expose the adhesive. Place filter adhesive-side down in the diamond-shaped insert in the center of the waste receptacle lid; close waste receptacle compartment cover.

7. To fill the unit, **use only a hard clumping litter**. Do not use non-clumping litter, crystal or pearl-like litters. Fill the LitterMaid® litter box to **just below** the "Max Line."

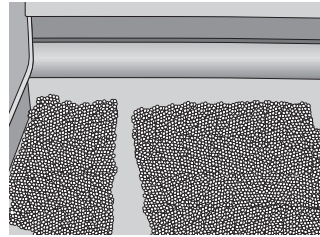
8. Use the LitterMaid® scoop and rake cleaner to check that the litter is at the correct level in the center of the unit. Do not overfill the unit or it will not operate properly.

9. Remove the AC adapter from the paper pulp and plug it into the unit.

10. Plug the cord into a standard electrical wall outlet.

11. Press the On/Off button to "on" and a green light will appear.

12. The removable rake will automatically run through its first cleaning cycle and will smooth out litter.



Your LitterMaid® litter box is now ready to use!

Note: Refer to the Use & Care manual for further instructions on the removal and cleaning of the rake.

If your unit is not working properly, please refer to TROUBLESHOOTING in the Use & Care manual.

If you need to acclimate your cat to the LitterMaid® litter box, refer to ACCLIMATING YOUR CAT in the Use & Care manual.

Optional Items:

For more information, call: Toll-Free 1-800-LITMAID (548-6243).

Or, visit our website: www.littermaid.com

Litter box carpet: Place the unit on the litter box carpet.

Cat Paw-cleaning Ramp:

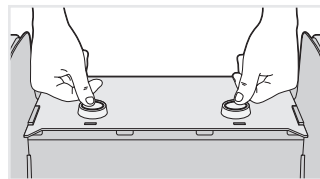
13. The paw-cleaning ramp has two holes that snap into the pivot pins on the inside of the waste receptacle compartment cover. Position the paw-cleaning ramp with carpet-side facing up.

14. Point the pivot pins toward the disposable waste receptacle end of the unit. Lift the paw-cleaning ramp and insert one of the pivot pins into one of the holes.

15. Slightly stretch the other pivot pin to reach the other hole, then insert. Tug slightly on the paw-cleaning ramp to ensure that it is firmly in place.

Removing Disposable Waste Receptacle:

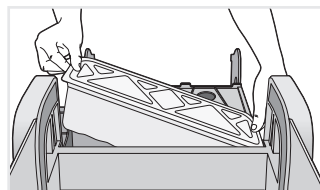
Important: We recommend avoiding contact with waste material. Wear rubber or latex gloves when handling used disposable waste receptacle.



16. Depress the two pushtabs in the waste receptacle compartment cover. Detach the disposable waste receptacle lid from the waste receptacle compartment cover.

17. Lift the compartment cover, exposing the closed disposable waste receptacle assembly.

18. Pull the disposable waste receptacle edge free from the tabs holding it in place.



19. To dispose of the waste receptacle, press in on four corners of lid to secure lid to the waste receptacle and dispose.