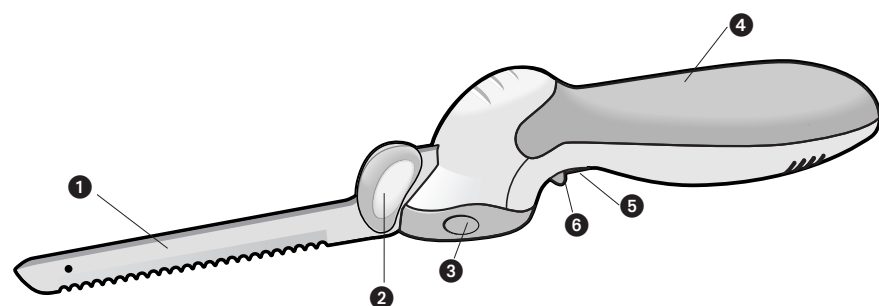
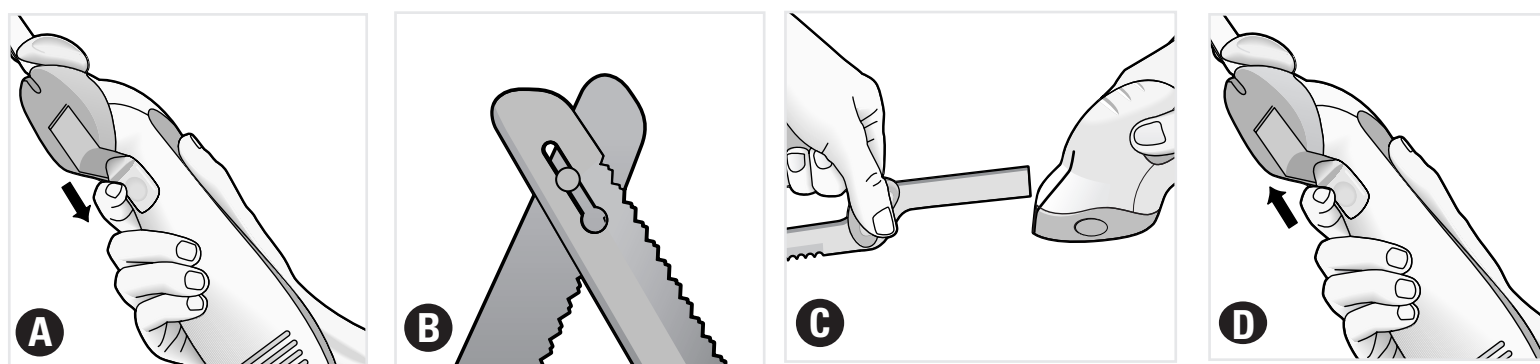


Product may vary slightly from what is illustrated



1. 9" (229 mm) Slicing/Carving blade
2. Finger grips
3. Blade release button
4. Handle
5. "On" switch
6. TriggerGuard™ lock



How to Use

CAUTION: The TriggerGuard™ lock must be slid over the "On" switch before inserting or removing Blades.

IMPORTANT: When the TriggerGuard™ "Lock" is in position, the "On" Switch cannot be pressed inward even when the Knife is plugged in (A).

1. Wash the blades in hot, soapy water or in the dishwasher. Rinse and dry thoroughly. Slip the rivet at the tip of one blade into the keyhole slot on the other (B).
2. When inserting or removing blades, always be sure the TriggerGuard™ lock is slid over the "On" switch and the cord is unplugged.
3. With the cutting (serrated) edge facing AWAY from your hand, grab the blades by the finger grips and insert the two ends of the blades into the slots of the handle (C). The blades will "click" into place. Plug the cord into a standard outlet. Position the food to be sliced on a cutting board.
4. Release the TriggerGuard™ lock by sliding it toward the blade (D). Press the "On" switch and guide the knife blades down through the food. Use a carving fork to hold the food, if necessary.

CAUTION: NEVER place your hand over the blade to support it while operating this knife. The blades are designed to slide back and forth for cutting.

REMOVING BLADES

1. To remove the blades, the TriggerGuard™ lock must be covering the "On" Switch and the cord must be unplugged. Press the blade release buttons on both sides of the handle. Grasp the blades by the finger grips with the cutting edge facing AWAY from your hand and pull out away from the handle. (See C) Instructions also appear on the underside of the handle.

Care and Cleaning

1. Before cleaning any part of the electric knife, engage the TriggerGuard™ Lock, unplug the cord, and remove the blades.
2. Knife blades may be washed in hot, soapy water or in the dishwasher. Dry all parts thoroughly before next use.
3. The knife handle and cord may be cleaned with a damp cloth. Do not use any abrasive cleanser or material to clean any part of the knife as it may harm the finish. Do not put the knife handle in water.

Note: If the power supply cord is damaged, it must be replaced by the manufacturer or its service agent or a similarly qualified person in order to avoid a hazard.

Soft-Touch Parts
NOTE: The soft-touch parts of this unit are free of natural rubber and latex. They are safe for individuals allergic or sensitive to these materials.

ELECTRICAL CORD
The cord of this appliance was selected to reduce the possibility of tangling in or tripping over a longer cord. If more length is needed, use an extension cord rated no less than 15-amperes. (For 220 volts rated products, use an extension cord rated no less than 6-amperes). When using an extension cord, do not let it drape over the working area or dangle where someone could accidentally trip over it. Handle cord carefully for longer life; avoid jerking or straining it at outlet and appliance connections.

POLARIZED PLUG (120V Models Only)
This appliance has a polarized plug (one blade is wider than the other). To reduce the risk of electric shock, this plug will fit in a polarized outlet only one way. If the plug does not fit fully in the outlet, reverse the plug. If it still does not fit, contact a qualified electrician. Do not modify the plug in any way.

Safe-Touch Parts
NOTE: The soft-touch parts of this unit are free of natural rubber and latex. They are safe for individuals allergic or sensitive to these materials.

Note: If the power supply cord is damaged, it must be replaced by the manufacturer or its service agent or a similarly qualified person in order to avoid a hazard.

Safe-Touch Parts
NOTE: The soft-touch parts of this unit are free of natural rubber and latex. They are safe for individuals allergic or sensitive to these materials.

ELECTRICAL CORD
The cord of this appliance was selected to reduce the possibility of tangling in or tripping over a longer cord. If more length is needed, use an extension cord rated no less than 15-amperes. (For 220 volts rated products, use an extension cord rated no less than 6-amperes). When using an extension cord, do not let it drape over the working area or dangle where someone could accidentally trip over it. Handle cord carefully for longer life; avoid jerking or straining it at outlet and appliance connections.

POLARIZED PLUG (120V Models Only)
This appliance has a polarized plug (one blade is wider than the other). To reduce the risk of electric shock, this plug will fit in a polarized outlet only one way. If the plug does not fit fully in the outlet, reverse the plug. If it still does not fit, contact a qualified electrician. Do not modify the plug in any way.

Safe-Touch Parts
NOTE: The soft-touch parts of this unit are free of natural rubber and latex. They are safe for individuals allergic or sensitive to these materials.

Note: If the power supply cord is damaged, it must be replaced by the manufacturer or its service agent or a similarly qualified person in order to avoid a hazard.

Safe-Touch Parts
NOTE: The soft-touch parts of this unit are free of natural rubber and latex. They are safe for individuals allergic or sensitive to these materials.

ELECTRICAL CORD
The cord of this appliance was selected to reduce the possibility of tangling in or tripping over a longer cord. If more length is needed, use an extension cord rated no less than 15-amperes. (For 220 volts rated products, use an extension cord rated no less than 6-amperes). When using an extension cord, do not let it drape over the working area or dangle where someone could accidentally trip over it. Handle cord carefully for longer life; avoid jerking or straining it at outlet and appliance connections.

POLARIZED PLUG (120V Models Only)
This appliance has a polarized plug (one blade is wider than the other). To reduce the risk of electric shock, this plug will fit in a polarized outlet only one way. If the plug does not fit fully in the outlet, reverse the plug. If it still does not fit, contact a qualified electrician. Do not modify the plug in any way.

Safe-Touch Parts
NOTE: The soft-touch parts of this unit are free of natural rubber and latex. They are safe for individuals allergic or sensitive to these materials.

Note: If the power supply cord is damaged, it must be replaced by the manufacturer or its service agent or a similarly qualified person in order to avoid a hazard.

Safe-Touch Parts
NOTE: The soft-touch parts of this unit are free of natural rubber and latex. They are safe for individuals allergic or sensitive to these materials.

ELECTRICAL CORD
The cord of this appliance was selected to reduce the possibility of tangling in or tripping over a longer cord. If more length is needed, use an extension cord rated no less than 15-amperes. (For 220 volts rated products, use an extension cord rated no less than 6-amperes). When using an extension cord, do not let it drape over the working area or dangle where someone could accidentally trip over it. Handle cord carefully for longer life; avoid jerking or straining it at outlet and appliance connections.

POLARIZED PLUG (120V Models Only)
This appliance has a polarized plug (one blade is wider than the other). To reduce the risk of electric shock, this plug will fit in a polarized outlet only one way. If the plug does not fit fully in the outlet, reverse the plug. If it still does not fit, contact a qualified electrician. Do not modify the plug in any way.

Safe-Touch Parts
NOTE: The soft-touch parts of this unit are free of natural rubber and latex. They are safe for individuals allergic or sensitive to these materials.

Note: If the power supply cord is damaged, it must be replaced by the manufacturer or its service agent or a similarly qualified person in order to avoid a hazard.

SAVE THESE INSTRUCTIONS.

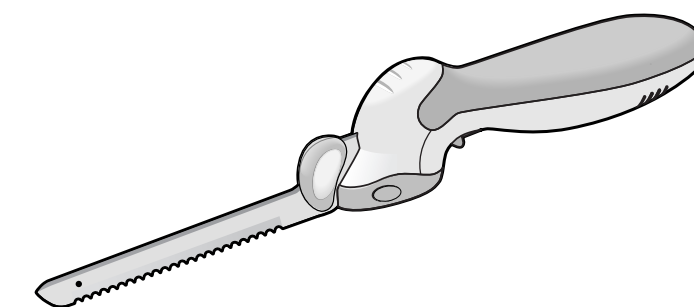
- Blades are sharp. Handle carefully. Always handle blades with hand away from cutting edge. Always store blades with cutting edge away from you.
 - Do not let the cord contact hot surface, including the stove.
 - Do not let cord hang over edge of table or counter.
 - Do not use outdoors.
 - The use of attachments not recommended or sold by the appliance manufacturer may cause fire, electric shock or injury.
 - Do not operate any appliance with a damaged cord or plug or after the appliance malfunctions or is dropped or damaged in any manner. Return the appliance to the nearest authorized service facility for examination, repair, or electrical or mechanical adjustment.
 - Avoid contacting moving parts.
 - Unplug from outlet when not in use, before putting on or taking off parts and before cleaning. Disconnect when changing blades.
 - Close supervision is necessary when any appliance is used by or near children.
 - To protect against risk of electric shock do not immerse plug, cord, or handle in water or other liquid. Do not operate knife in water or under running water.
 - Read all instructions.
- When using electrical appliances, in order to reduce the risk of fire, electric shock, and/or injury to persons, basic safety precautions should always be followed, including the following:

IMPORTANT SAFETY INSTRUCTIONS

PLEASE READ AND SAVE THIS USE AND CARE BOOK.

cook's essentials®

Electric Knife



100 W 120 V~ 60 Hz

cook's essentials® is a trademark of QVC, Inc.
Made in People's Republic of China
Printed in People's Republic of China
Pub. No. 1000001200 -00-RV00